



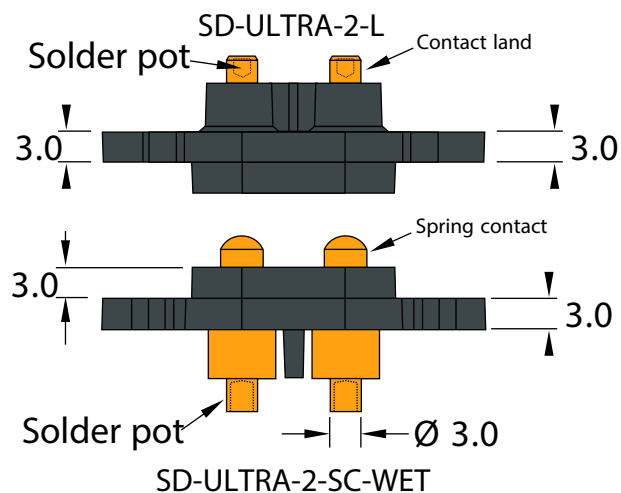
SD-ULTRA-2-SC-WET
Waterproof Spring loaded interface array
high current, hard wire connection
or solder into PCB, heavy spring



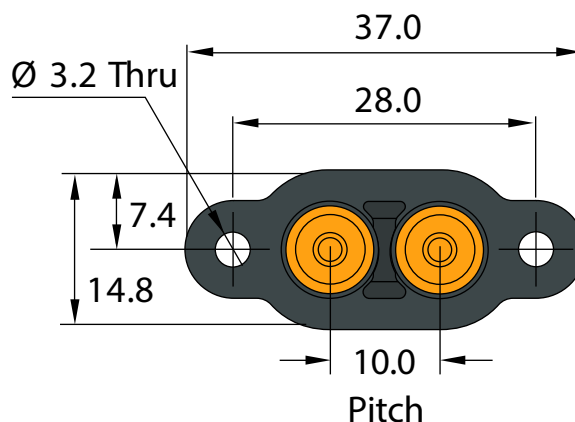
Test Probes & Interfacing Components

Telephone: +44 (0)1787 478678 | sales@coda-systems.co.uk | technical@coda-systems.co.uk

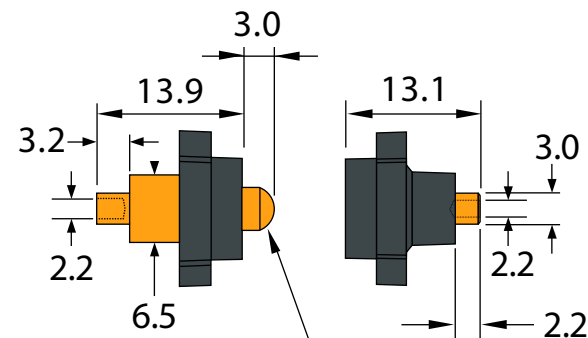
Top view



Back view
spring contact side



Side view



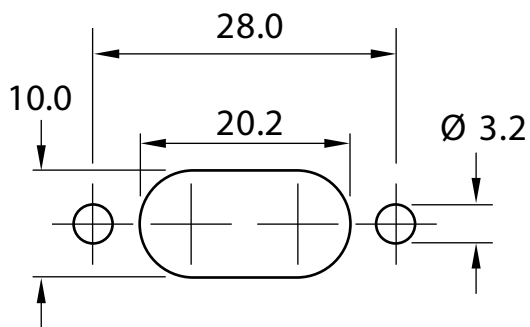
SPRING FORCE	425g
COMBINED (x2)	850g
WORKING TRAVEL	2.05mm



SD-ULTRA-2-SC-WET



SD-ULTRA-2-L



Panel cut-out dimensions

PART NUMBERS SD-ULTRA-2-SC-WET SD-ULTRA-2-L				THE INFORMATION CONTAINED IN THIS DRAWING IS THE PROPERTY OF © CODA SYSTEMS LTD. NOT TO BE COPIED OR DISCLOSED TO A THIRD PARTY WITHOUT THE PRIOR, WRITTEN CONSENT OF CODA SYSTEMS LTD.	
SIZE A4	SCALE NTS	PLASTIC TYPE POLYAMIDE PA66		TOLERANCES LINEAR .x = ±0.2mm .xx = ±0.10mm .xxx = ±0.025mm SURFACE ANGULAR ±1°	UNLESS OTHERWISE SPECIFIED 1. DIMENSIONS ARE IN MM 2. DIMENSIONAL LIMITS APPLY AFTER PLATING / COATING 3. REMOVE ALL BURRS AND BREAK EDGES .25 MAX 4. MACHINE FILLET RADIUS .25 MAX 5. MACHINED SURFACES FLAT WITHIN 0.08 mm/mm 6. NON-MACHINED SURFACES FLAT WITHIN 0.25 mm/mm 7. DIAMETERS ON COMMON CL TO BE CONCENTRIC WITHIN 0.13 8. PERPENDICULAR SURFACES TO BE SQUARE WITHIN .13 mm/mm 9. REFERENCE () DIMENSIONS HAVE NO TOLERANCES
ENGINEER GD	VERSION A1	CHECKED BY H. DAVIS	DATE 10/09/25		