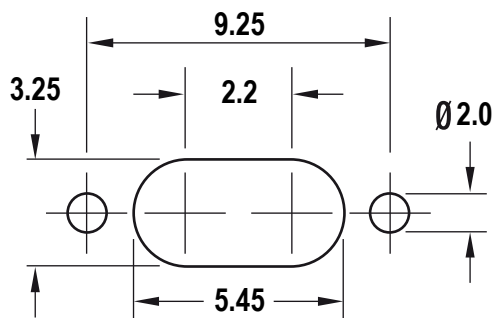
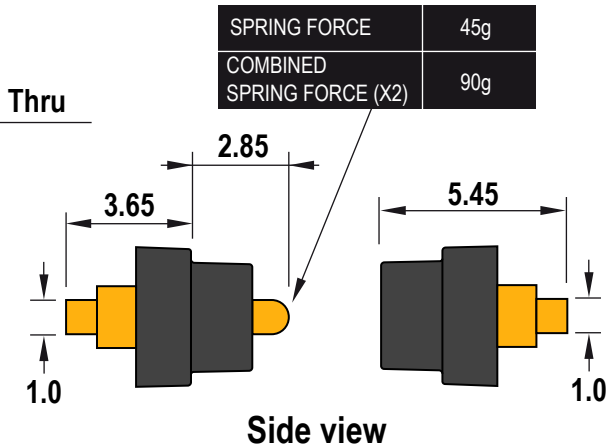
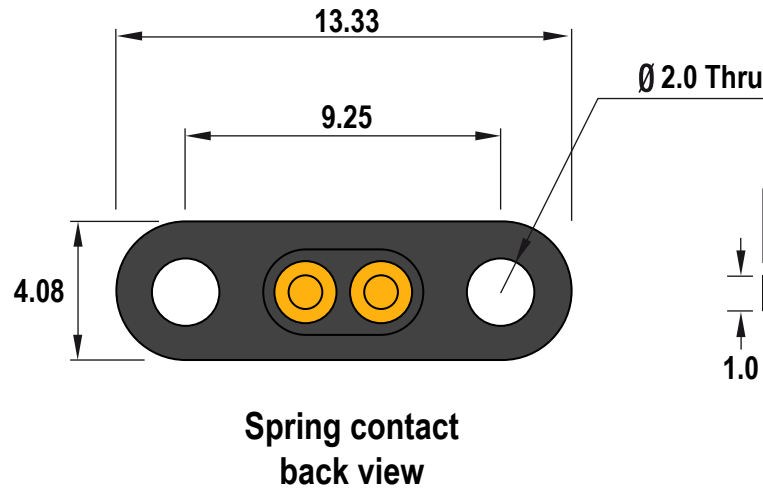
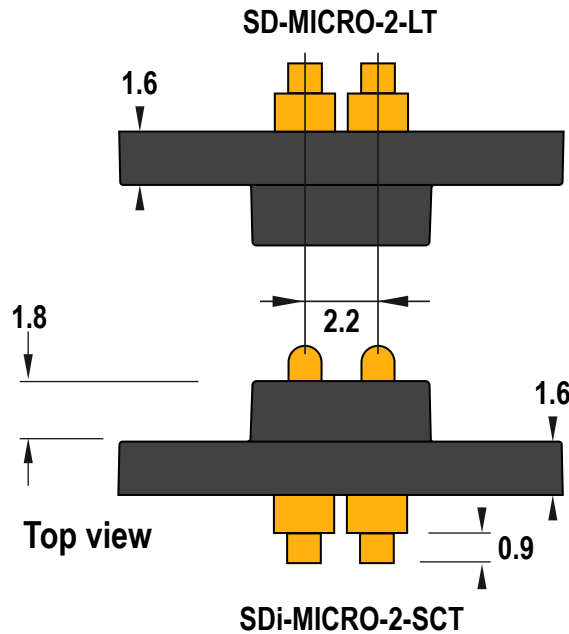


SD-MICRO-2-SCT & LT
Spring loaded docking connector, direct PCB mounting or flexi-PCB



Test Probes & Interfacing Components

Telephone: +44 (0)1787 478678 | sales@coda-systems.co.uk | technical@coda-systems.co.uk



Spring contact: PD0JST
Contact land: IPPORT
Ideal compression of PD0: 0.8mm

PART NUMBER SD-MICRO-2-SCT SD-MICRO-2-LT		REGISTERED COMMUNITY DESIGN SCT UK: 6 375 506 CA: 238780-3 LT UK: 6 375 507 EU: DM/244646		THE INFORMATION CONTAINED IN THIS DRAWING IS THE PROPERTY OF © CODA SYSTEMS LTD. NOT TO BE COPIED OR DISCLOSED TO A THIRD PARTY WITHOUT THE PRIOR, WRITTEN CONSENT OF CODA SYSTEMS LTD.	
SIZE A4	SCALE NTS	PLASTIC TYPE POLYAMIDE PA66	VERSION A	TOLERANCES LINEAR .x = ± 0.2mm .xx = ± 0.10mm .xxx = ± 0.025mm	UNLESS OTHERWISE SPECIFIED 1. DIMENSIONS ARE IN MM 2. DIMENSIONAL LIMITS APPLY AFTER PLATING / COATING 3. REMOVE ALL BURRS AND BREAK EDGES .25 MAX 4. MACHINE FILLET RADIUS .25 MAX 5. MACHINED SURFACES FLAT WITHING 0.08 mm/mm 6. NON-MACHINED SURFACES FLAT WITHING 0.25 mm/mm 7. DIAMETERS ON COMMON CL TO BE CONCENTRIC WITHING 0.13 8. PERPENDICULAR SURFACES TO BE SQUARE WITHING .13 mm/mm 9. REFERENCE () DIMENSIONS HAVE NO TOLERANCES
RoHS Compliant? <input checked="" type="checkbox"/>				SURFACE ANGULAR ± 1°	
ENGINEER G. D		CHECKED BY H. D		DATE 18/06/24	DRAWN IN ACCORDANCE WITH ISO STANDARDS