

**Long travel spring-loaded closure contact,
front fitment, turret solder connection.
LT-LARGE-JST**

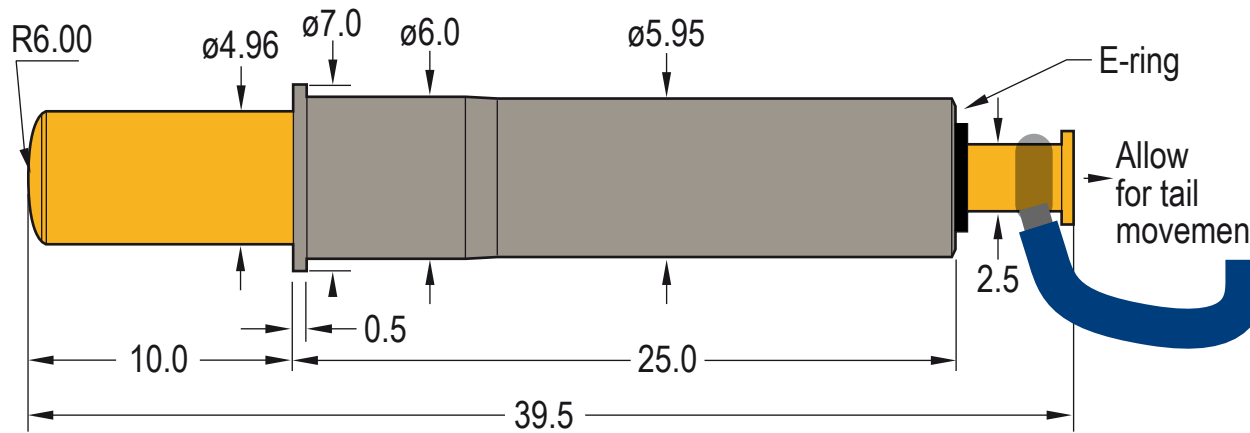


**Test Probes &
Interfacing Components**

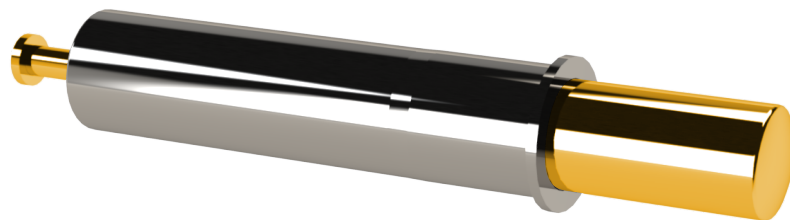
Telephone: +44 (0)1787 478678

sales@coda-systems.co.uk

technical@coda-systems.co.uk



Specifications	
Materials	
Plunger & Barrel; Brass C3604 Spring; SUS304, E-ring SUS 301	
Plating	
Contact Surface; Ni plated 3-5µm on barrel. Gold on plunger	
Electrical	
Rated current & voltage at working height Quiescent use; 3amps DC at 5V	
Mechanical	
Spring force; 240g at 6.5mm compression	
Design	
To ensure the best usage, please ensure operation position is based on the working height	
Installation	
<ul style="list-style-type: none"> • Press fitment from the top • Mounting hole size; 5.95mm • Plunger optimum compression 6.50mm • Connection method; Solder cable around turret tail • Panel thickness; 5.0mm min. 	



PART NUMBER LT-LARGE-JST		THE INFORMATION CONTAINED IN THIS DRAWING IS THE PROPERTY OF © CODA SYSTEMS LTD. NOT TO BE COPIED OR DISCLOSED TO A THIRD PARTY WITHOUT THE PRIOR, WRITTEN CONSENT OF CODA SYSTEMS LTD.	
SIZE A4	SCALE NTS	DRAWN IN ACCORDANCE WITH ISO STANDARDS	UNLESS OTHERWISE SPECIFIED 1. DIMENSIONS ARE IN MM 2. DIMENSIONAL LIMITS APPLY AFTER PLATING / COATING 3. REMOVE ALL BURRS AND BREAK EDGES .25 MAX 4. MACHINE FILLET RADIUS .25 MAX 5. MACHINED SURFACES FLAT WITHING 0.08 mm/mm 6. NON-MACHINED SURFACES FLAT WITHIN 0.25 mm/mm 7. DIAMETERS ON COMMON CL TO BE CONCENTRIC WITHIN 0.13 8. PERPENDICULAR SURFACES TO BE SQUARE WITHIN .13 mm/mm 9. REFERENCE () DIMENSIONS HAVE NO TOLERANCES
RoHS Compliant?		DATE 14/04/23	
<input checked="" type="checkbox"/>		VERSION D2	