



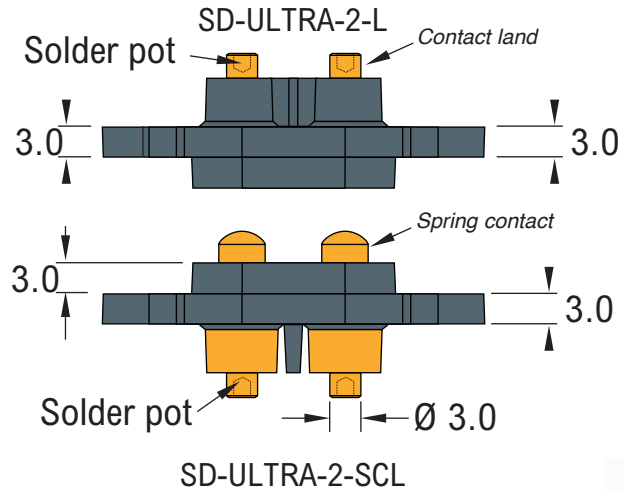
SD-ULTRA-POWER
Spring loaded interface array, high current, hard wire connection or solder into PCB, light spring



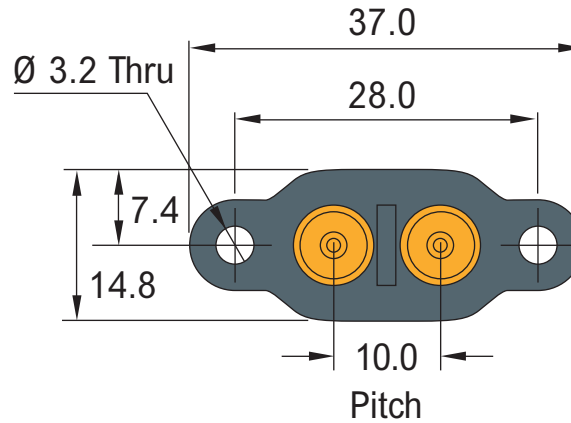
Test Probes & Interfacing Components

Telephone: +44 (0)1787 478678 | sales@coda-systems.co.uk | technical@coda-systems.co.uk | Fax: +44 (0)1787 274194

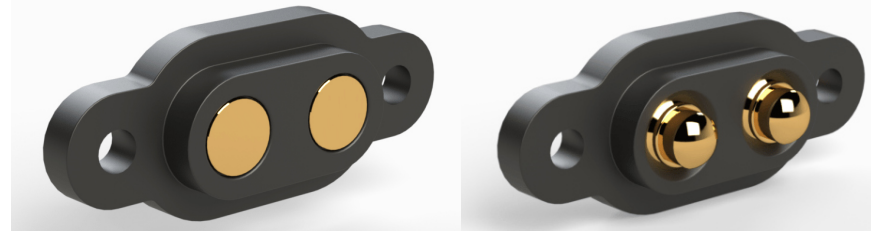
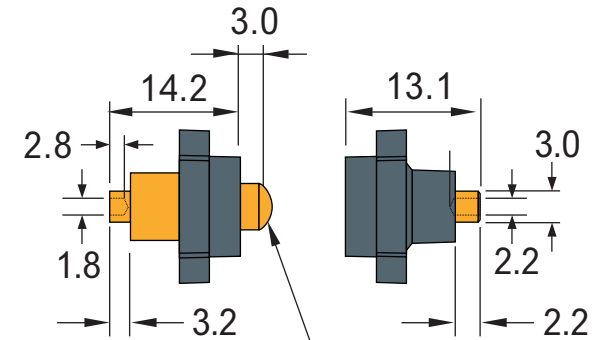
Top view



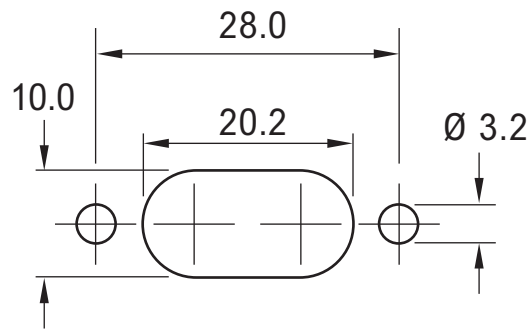
Back view
spring contact side



Side view



SPRING FORCE	200g
COMBINED (x2)	400g
WORKING TRAVEL	2.05mm



Panel cut-out dimensions

PART NUMBERS			SD-ULTRA-2-SCL SD-ULTRA-2-L	
SIZE	SCALE	PLASTIC TYPE		
A4	1:1	POLYAMIDE PA66		
ENGINEER	VERSION	CHECKED BY	DATE	
KJP	D3	H. DAVIS	07/03/23	

THE INFORMATION CONTAINED IN THIS DRAWING IS THE PROPERTY OF © CODA SYSTEMS LTD. NOT TO BE COPIED OR DISCLOSED TO A THIRD PARTY WITHOUT THE PRIOR, WRITTEN CONSENT OF CODA SYSTEMS LTD.

TOLERANCES

LINEAR
.x = ±0.2mm
.xx = ±0.10mm
.xxx = ±0.025mm

SURFACE
ANGULAR ± 1°

UNLESS OTHERWISE SPECIFIED

1. DIMENSIONS ARE IN MM
2. DIMENSIONAL LIMITS APPLY AFTER PLATING / COATING
3. REMOVE ALL BURRS AND BREAK EDGES .25 MAX
4. MACHINE FILLET RADIUS .25 MAX
5. MACHINED SURFACES FLAT WITHIN 0.08 mm/mm
6. NON-MACHINED SURFACES FLAT WITHIN 0.25 mm/mm
7. DIAMETERS ON COMMON CL TO BE CONCENTRIC WITHIN 0.13
8. PERPENDICULAR SURFACES TO BE SQUARE WITHIN .13 mm/mm
9. REFERENCE () DIMENSIONS HAVE NO TOLERANCES

DRAWN IN ACCORDANCE WITH ISO STANDARDS