

SD-MAGNETIC SERIES
 Self-aligning magnetic cover system.
 For use with some surface mounted Swift-Dock
 spring loaded connector sets.



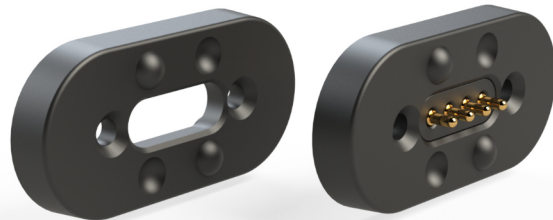
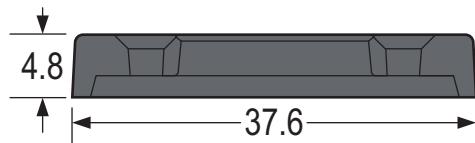
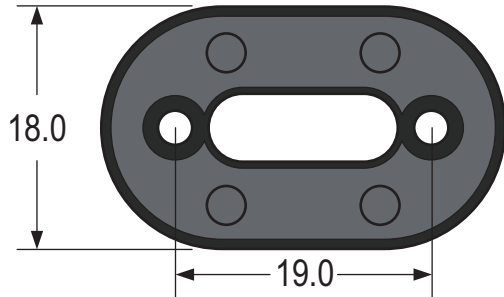
**Test Probes &
 Interfacing Components**

Telephone: +44 (0)1787 478678

sales@coda-systems.co.uk

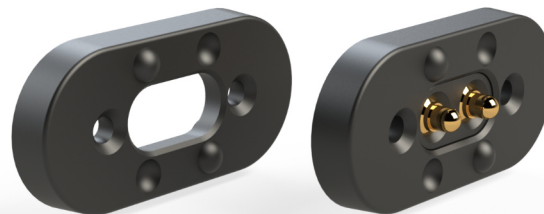
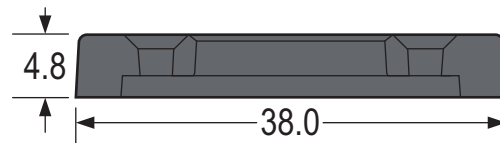
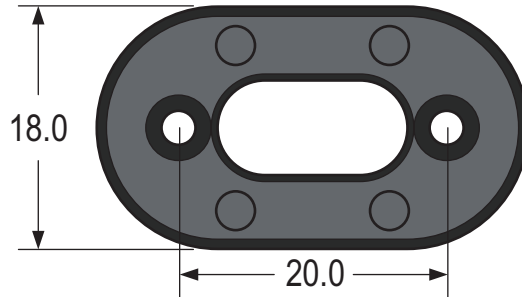
technical@coda-systems.co.uk

SMALL



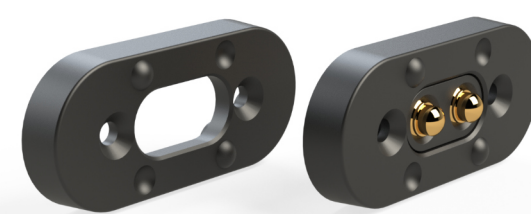
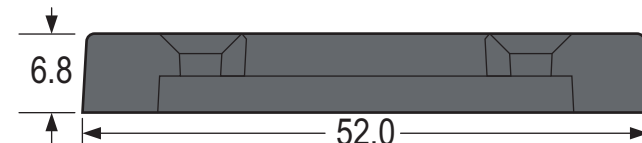
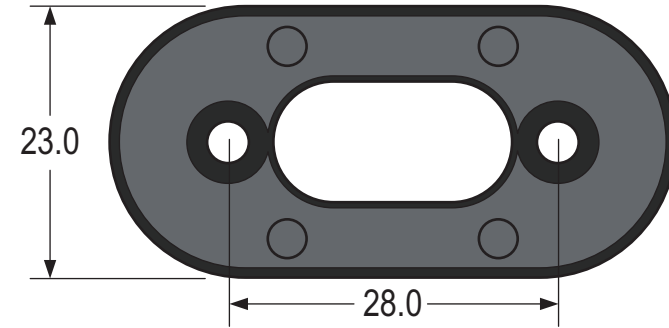
For use with:
 SD-MINI-4-SCL
 SD-MINI-4-L
 Fixing bolt: Stainless steel countersink M2

MEDIUM



For use with:
 SWIFT-DOCK-2
 SD-DATA-7
 Fixing bolt: Stainless steel countersink M2

LARGE



For use with:
 SD-ULTRA-2-SCL, SC
 SD-DATAPOWER-8
 SD-DATA-12
 Fixing bolt: Stainless steel countersink M3

Top view

Side view

Magnet disengagement force specifications

SD-MINI-4-SCL	400g
SWIFT-DOCK-2	800g
SD-DATA-7	400g
SD-DATAPOWER-8	1450g
SD-DATA-12	1500g
SD-ULTRA-2-SCL	1600g
SD-ULTRA-SC	1500g

PART NUMBERS **SD-MAGNETIC-SMALL
 SD-MAGNETIC-MEDIUM
 SD-MAGNETIC-LARGE**

SIZE	SCALE	PLASTIC TYPE	MAGNETS
A4	NTS	NYLON 6	NEO N42 or N52

RoHS Compliant?

ENGINEER	VERSION	CHECKED BY	DATE
HD	A2	H. DAVIS	29/09/22

THE INFORMATION CONTAINED IN THIS DRAWING IS THE PROPERTY OF © CODA SYSTEMS LTD.
 NOT TO BE COPIED OR DISCLOSED TO A THIRD PARTY WITHOUT THE PRIOR,
 WRITTEN CONSENT OF CODA SYSTEMS LTD.

TOLERANCES
LINEAR .x = ±0.2mm .xx = ±0.10mm .xxx = ±0.025mm
SURFACE ANGULAR ±1°
DRAWN IN ACCORDANCE WITH ISO STANDARDS

UNLESS OTHERWISE SPECIFIED

1. DIMENSIONS ARE IN MM
2. DIMENSIONAL LIMITS APPLY AFTER PLATING / COATING
3. REMOVE ALL BURRS AND BREAK EDGES .25 MAX
4. MACHINE FILLET RADIUS .25 MAX
5. MACHINED SURFACES FLAT WITHIN 0.08 mm/mm
6. NON-MACHINED SURFACES FLAT WITHIN 0.25 mm/mm
7. DIAMETERS ON COMMON CL TO BE CONCENTRIC WITHIN 0.13
8. PERPENDICULAR SURFACES TO BE SQUARE WITHIN .13 mm/mm
9. REFERENCE () DIMENSIONS HAVE NO TOLERANCES