



**SD-POWER-2**  
Spring loaded interface  
array, high current, hard  
wire connection.



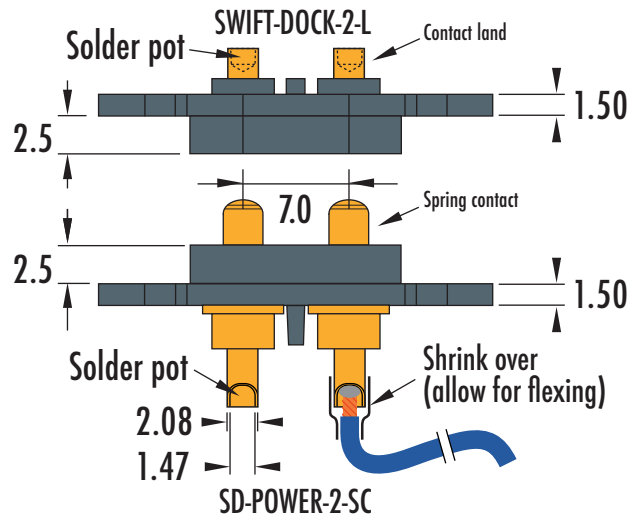
**Test Probes &  
Interfacing Components**

Telephone: +44 (0)1787 478678

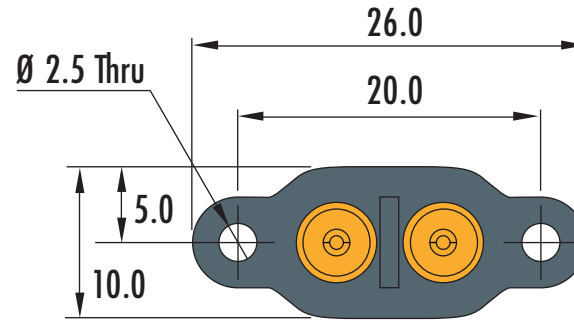
sales@coda-systems.co.uk

technical@coda-systems.co.uk

**Top view**

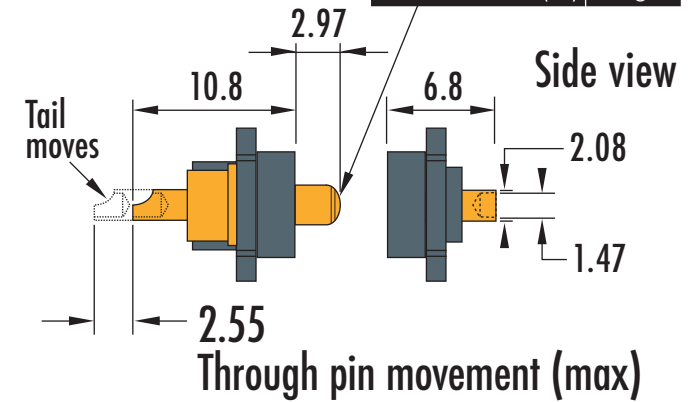


**Back view  
spring contact side**

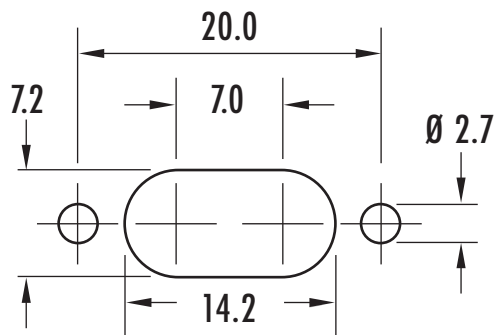


SPRING FORCE	170g
COMBINED SPRING FORCE (x2)	340g

**Side view**



**Spring contact: HD-PD11JXT-SP**  
**Contact land: IPP2S**



**Panel cut-out dimensions  
for back fitment**

PART NUMBERS			<b>SD-POWER-2-SC &amp; SWIFT-DOCK-2-L</b>		THE INFORMATION CONTAINED IN THIS DRAWING IS THE PROPERTY OF © CODA SYSTEMS LTD. NOT TO BE COPIED OR DISCLOSED TO A THIRD PARTY WITHOUT THE PRIOR, WRITTEN CONSENT OF CODA SYSTEMS LTD.	
SIZE	SCALE	PLASTIC TYPE	TOLERANCES		UNLESS OTHERWISE SPECIFIED 1. DIMENSIONS ARE IN MM 2. DIMENSIONAL LIMITS APPLY AFTER PLATING / COATING 3. REMOVE ALL BURRS AND BREAK EDGES .25 MAX 4. MACHINE FILLET RADIUS .25 MAX 5. MACHINED SURFACES FLAT WITHIN 0.08 mm/mm 6. NON-MACHINED SURFACES FLAT WITHIN 0.25 mm/mm 7. DIAMETERS ON COMMON CL TO BE CONCENTRIC WITHIN 0.13 8. PERPENDICULAR SURFACES TO BE SQUARE WITHIN .13 mm/mm 9. REFERENCE ( ) DIMENSIONS HAVE NO TOLERANCES	
A4	2:1	POLYAMIDE PA66	LINEAR .x = ± 0.2mm .xx = ± 0.10mm .xxx = ± 0.025mm			
RoHS Compliant?			SURFACE ANGULAR ± 1°			
ENGINEER	VERSION	CHECKED BY	DATE	DRAWN IN ACCORDANCE WITH ISO STANDARDS		
KJP	D3	H. DAVIS	12/06/20			