



SD-POWER-2-SC-PRO
 Extended travel spring loaded interface
 array. High current, with hard wire
 connection & with optional PCB fitment.



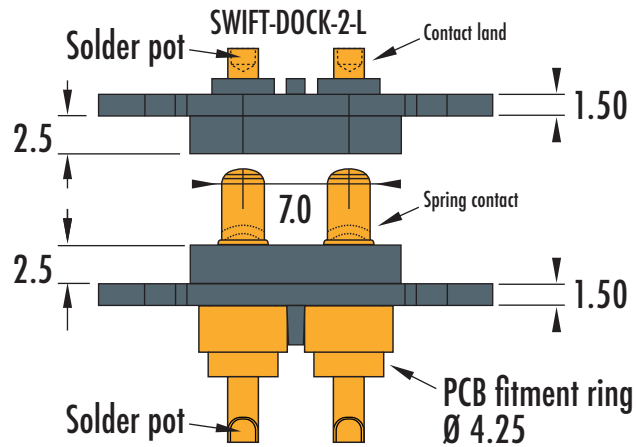
**Test Probes &
 Interfacing Components**

Telephone: +44 (0)1787 478678

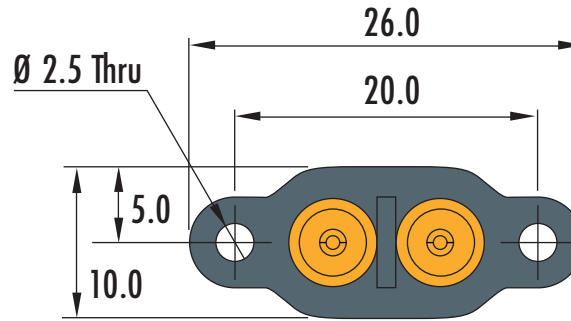
sales@coda-systems.co.uk

technical@coda-systems.co.uk

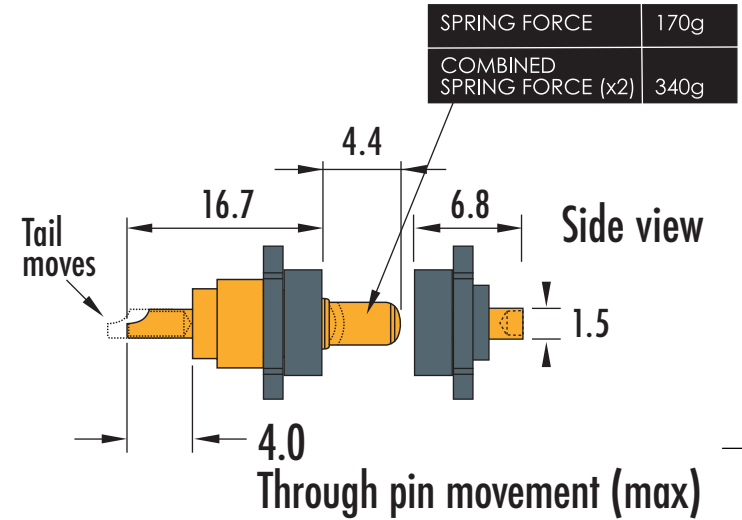
Top view



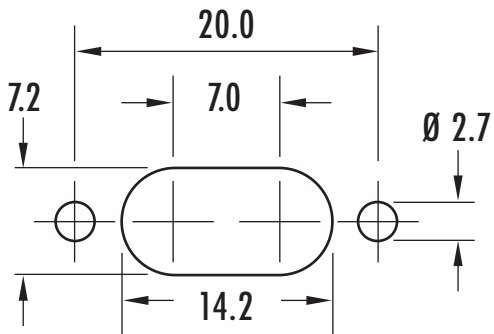
SD-POWER-2-SC-PRO



**Back view
 spring contact side**



Spring contact: HD-LPD11JXT-SP
Contact land: IPP2S
Working travel: 3.0 - 3.5mm



Panel cut-out dimensions

PART NUMBERS				SD-POWER-2-SC-PRO & SWIFT-DOCK-2-L		THE INFORMATION CONTAINED IN THIS DRAWING IS THE PROPERTY OF © CODA SYSTEMS LTD. NOT TO BE COPIED OR DISCLOSED TO A THIRD PARTY WITHOUT THE PRIOR, WRITTEN CONSENT OF CODA SYSTEMS LTD.	
SIZE	SCALE	PLASTIC TYPE		TOLERANCES		UNLESS OTHERWISE SPECIFIED 1. DIMENSIONS ARE IN MM 2. DIMENSIONAL LIMITS APPLY AFTER PLATING / COATING 3. REMOVE ALL BURRS AND BREAK EDGES .25 MAX 4. MACHINE FILLET RADIUS .25 MAX 5. MACHINED SURFACES FLAT WITHIN 0.08 mm/mm 6. NON-MACHINED SURFACES FLAT WITHIN 0.25 mm/mm 7. DIAMETERS ON COMMON CL TO BE CONCENTRIC WITHIN 0.13 8. PERPENDICULAR SURFACES TO BE SQUARE WITHIN .13 mm/mm 9. REFERENCE () DIMENSIONS HAVE NO TOLERANCES	
A4	2:1	POLYAMIDE PA66		LINEAR .x = ±0.2mm .xx = ±0.10mm .xxx = ±0.025mm			
RoHS Compliant?				<input checked="" type="checkbox"/>		SURFACE ANGULAR ± 1°	
ENGINEER	VERSION	CHECKED BY	DATE	DRAWN IN ACCORDANCE WITH ISO STANDARDS			
KJP	D2	H. DAVIS	16/04/20				