



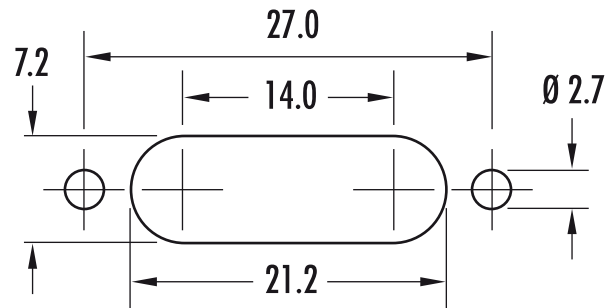
# SWIFT-DOCK-3P

Spring loaded interface  
array, PCB, hard wire

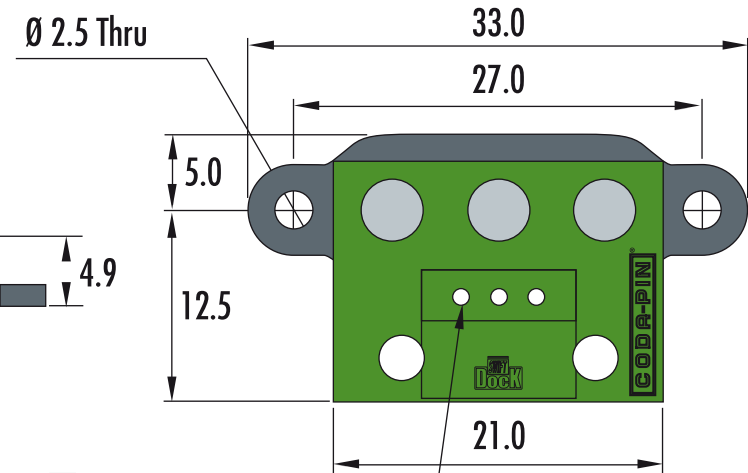


## Test Probes & Interfacing Components

Telephone: +44 (0)1787 478678 | sales@coda-systems.co.uk | technical@coda-systems.co.uk | Fax: +44 (0)1787 274194



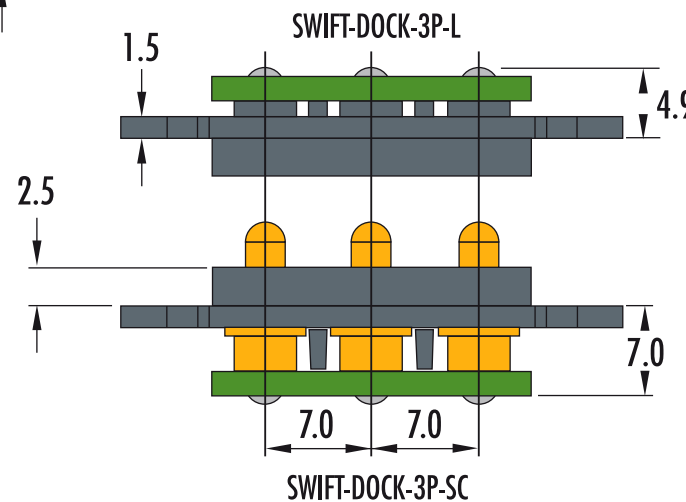
Panel cut-out dimensions



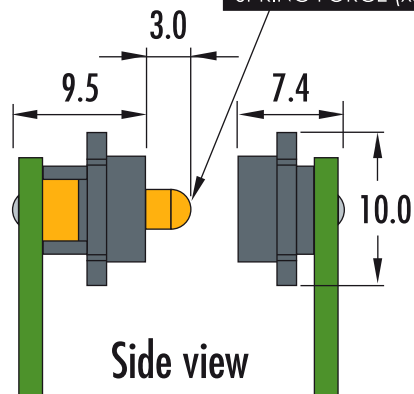
Back view (either side)

Spring contact: PD11JST-SP  
Contact land: IPP2S  
Ideal compression of PD11: 2mm

Top view




SPRING FORCE	120g
COMBINED SPRING FORCE (x3)	360g



Side view

WIRE SIZE (MAX) 0.9mm through hole	Equipment wire 16/0.2 3amps 7/0.25 1amp
--	---

PART NUMBERS		<b>SWIFT-DOCK-3P-L &amp; SWIFT-DOCK-3P-SC</b>		<b>REGISTERED COMMUNITY DESIGN REGISTRATION NUMBER 002 124 362-0002</b>		THE INFORMATION CONTAINED IN THIS DRAWING IS THE PROPERTY OF © CODA SYSTEMS LTD. NOT TO BE COPIED OR DISCLOSED TO A THIRD PARTY WITHOUT THE PRIOR, WRITTEN CONSENT OF CODA SYSTEMS LTD.			
SIZE	SCALE	PLASTIC TYPE			VERSION	<b>TOLERANCES</b> LINEAR .x = ± 0.2mm .xx = ± 0.10mm .xxx = ± 0.025mm  SURFACE ANGULAR ± 1°		<b>UNLESS OTHERWISE SPECIFIED</b> 1. DIMENSIONS ARE IN MM 2. DIMENSIONAL LIMITS APPLY AFTER PLATING / COATING 3. REMOVE ALL BURRS AND BREAK EDGES .25 MAX 4. MACHINE FILLET RADIUS .25 MAX 5. MACHINED SURFACES FLAT WITHIN 0.08 mm/mm 6. NON-MACHINED SURFACES FLAT WITHIN 0.25 mm/mm 7. DIAMETERS ON COMMON CL TO BE CONCENTRIC WITHIN 0.13 8. PERPENDICULAR SURFACES TO BE SQUARE WITHIN .13 mm/mm 9. REFERENCE ( ) DIMENSIONS HAVE NO TOLERANCES	
<b>A4</b>	<b>2:1</b>	<b>POLYAMIDE</b>			<b>D3</b>				
<b>RoHS Compliant?</b>									
ENGINEER <b>K. PERRY</b>		CHECKED BY <b>H. DAVIS</b>			DATE <b>05/04/19</b>	DRAWN IN ACCORDANCE WITH ISO STANDARDS			