



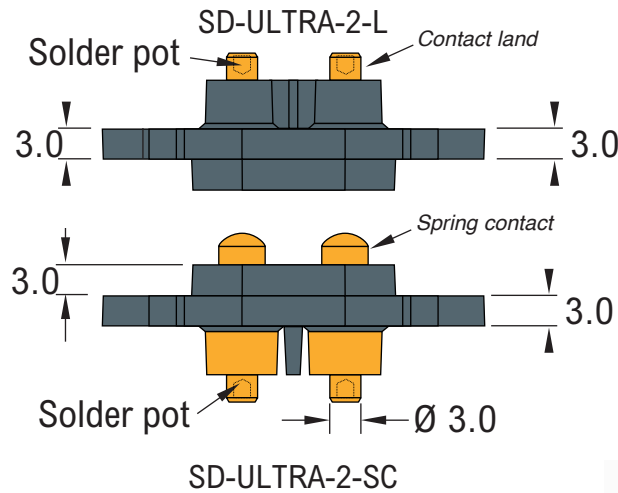
SD-ULTRA-POWER
Spring loaded interface array, high
current, hard wire connection or
solder into PCB, heavy spring



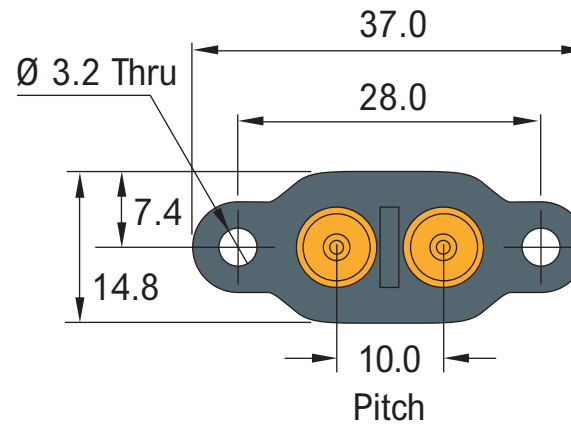
Test Probes & Interfacing Components

Telephone: +44 (0)1787 478678 | sales@coda-systems.co.uk | technical@coda-systems.co.uk | Fax: +44 (0)1787 274194

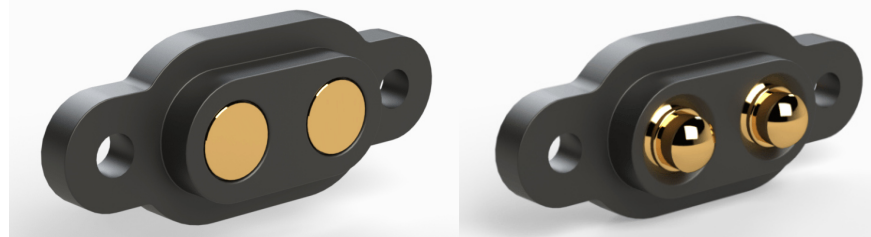
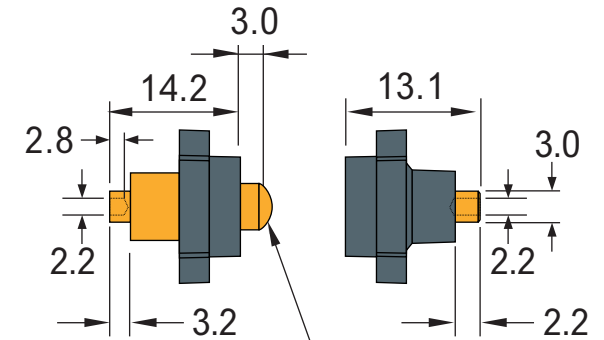
Top view



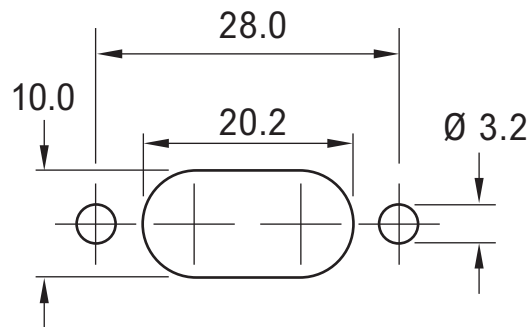
Back view
spring contact side



Side view



SPRING FORCE	325g
COMBINED (x2)	650g
WORKING TRAVEL	2.05mm



Panel cut-out dimensions

PART NUMBERS SD-ULTRA-2-SC SD-ULTRA-2-L				THE INFORMATION CONTAINED IN THIS DRAWING IS THE PROPERTY OF © CODA SYSTEMS LTD. NOT TO BE COPIED OR DISCLOSED TO A THIRD PARTY WITHOUT THE PRIOR, WRITTEN CONSENT OF CODA SYSTEMS LTD.	
SIZE A4	SCALE 1:1	PLASTIC TYPE POLYAMIDE PA66		TOLERANCES LINEAR .x = ± 0.2mm .xx = ± 0.10mm .xxx = ± 0.025mm SURFACE ANGULAR ± 1°	UNLESS OTHERWISE SPECIFIED 1. DIMENSIONS ARE IN MM 2. DIMENSIONAL LIMITS APPLY AFTER PLATING / COATING 3. REMOVE ALL BURRS AND BREAK EDGES .25 MAX 4. MACHINE FILLET RADIUS .25 MAX 5. MACHINED SURFACES FLAT WITHING 0.08 mm/mm 6. NON-MACHINED SURFACES FLAT WITHIN 0.25 mm/mm 7. DIAMETERS ON COMMON CL TO BE CONCENTRIC WITHIN 0.13 8. PERPENDICULAR SURFACES TO BE SQUARE WITHIN .13 mm/mm 9. REFERENCE () DIMENSIONS HAVE NO TOLERANCES
ENGINEER KJP	VERSION D3	CHECKED BY H. DAVIS	DATE 07/03/23	DRAWN IN ACCORDANCE WITH ISO STANDARDS	